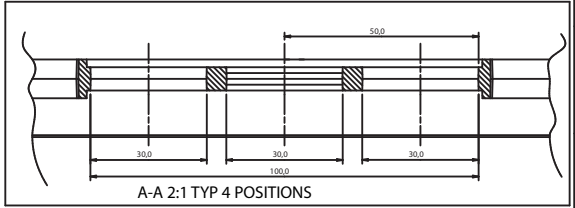


VOLUME : 77108mm<sup>3</sup>



- MOLDING PROCESS NOTES**
1. WRITTEN APPROVAL MUST BE OBTAINED FROM BAW FOR ANY NON-COMPLIANCE OF THE PART TO THE DRAWING
  2. LOCATION OF GATE, ELECTORS & PARTING LINES TO BE APPROVED IN WRITING BY BAW PRIOR TO TOOLING
  3. ALL SURFACES TO BE FREE OF ZINC MARRS, FLASHING OR ANY OTHER IMPERFECTIONS
  4. ALL SHARP EDGES CORNERED TO MAX UNLESS STATED
  5. **DRAFT ANGLE 1.5° UNLESS STATED**
  6. DIMENSIONAL TOLERANCES ARE INDICATED THIS WAY: "DIM" ALL DIMENSIONS ARE IN MM
  7. PLEASE REFER TO TOLERANCE TABLE SHOWN BELOW
  8. STRAIGHT EDGES TO BE STRAIGHT OVER WHOLE LENGTH BY TOLERANCE 0.040 X EDGE LENGTH AND NOT EXCEED 0.2 OVER ANY 25.4 DISTANCE
  9. FLAT SURFACES TO BE FLAT OVER WHOLE SURFACE BY 0.025 X LONGEST EDGE LENGTH AND NOT EXCEED 0.2 OVER ANY 25.4 SQ SECTION
  10. CIRCULAR OR PART CIRCULAR EDGES AND FACES TO BE ROUND TO TOLERANCE 0.04 X RADIUS AND NOT FACED 0.2 OVER ANY 25.4 DISTANCE
  11. THE DRAWING NUMBER, DATE INDICATOR AND RECYCLE SYMBOL MUST BE ADDED TO THE TOOL POSTIONS AGREED BY BAW
  12. THIS 2-D DRAWING IS FOR CHECKING PURPOSES ONLY UNLESS STATED
  13. ALL NOTES APPLY UNLESS OTHERWISE STATED
  14. ALL UNDIMENSIONED 3-D FEATURES ARE SUBJECT TO THE RELEVANT PROCESS TOLERANCES SHOWN ABOVE
  15. ALL DIMENSIONS SHOWN ARE - DRAFT UNLESS OTHERWISE INDICATED

PLASTIC PROCESS TOLERANCES	
NOMINAL DIMENSION	TOLERANCE
TOP MARK	<b>±0.1</b>
4 TO 16 MAX	<b>±0.2</b>
16 TO 25 MAX	<b>±0.3</b>
40 TO 250 MAX	<b>±0.5</b>
250 TO 1000 MAX	<b>±0.8</b>
ANGLES	<b>±0.1</b>

ISSUE HISTORY		
ISS	ECR/SAN NUMBER	REQ
5	PDC3307	RL
DRN	DATE	CKD
RM	13.8.09	

ISSUE DETAILS:  
4-OFF 32.0 WIDE CUT-OUTS IN UPSTAND ADDED; 4-OFF SETS OF 2.0 TYP RIBS ADDED FOR DOG LANDING

ISS	ECR/SAN NUMBER	REQ
4		
DRN	DATE	CKD
RM	9.6.09	

ISSUE DETAILS:  
DRAWING RELEASED - NO CHANGES TO PART



MATERIAL	FINISH	TITLE
BLACK H.I.P.S	FREE OF MACHINING MARKS	PMK CWM7.5 FRAME

FIRST DRAWN BY	COPYRIGHT C	DOC PART NO.
PAUL GOCHER	2009	
DATE	SCALE	DRG SIZE
20/5/09	3:4	A1

3-D DATA FILE NO	2-D DRG. NO.
A9944 -ISS- 4	A9944-1-1

IF IN DOUBT ASK	
ALL COMPONENTS MUST BE RHHS COMPLIANT	
PART NO.	<b>MM06467</b>
3-D DATA FILE NO	A9944 -ISS- 4
2-D DRG. NO.	A9944-1-1
ISS	5